



SINCE 1947

XL6000M

MATTRESS

PANEL

QUILTER





XL6000M COMPUTER QUILTER

THE WORLD'S MOST ECONOMICAL SINGLE NEEDLE MATTRESS PANEL QUILTING MACHINE

ABM International, Inc. manufactures the world's most cost effective tack and jump computerized quilting machine. The XL6000M Computer Quilter can be operated with ease and produces the most complete and unique patterns. It features three-axis digital brushless servo control, providing superior quality stitching, ease of pattern and size changes, and low maintenance operation.

Utilizing the unique XL6000M Table, one operator stretches and racks the mattress top materials while the machine simultaneously quilts another mattress top.

ABM has spent many years developing a sewhead specifically designed for the mattress industry. Our new high lift mattress head with compound feed is capable of sewing the thickest and most dense pillow top materials including **latex, rubber, memory foam, viscous foam, fiber, wool, cotton, and more.** Up to 5" can be quilted.



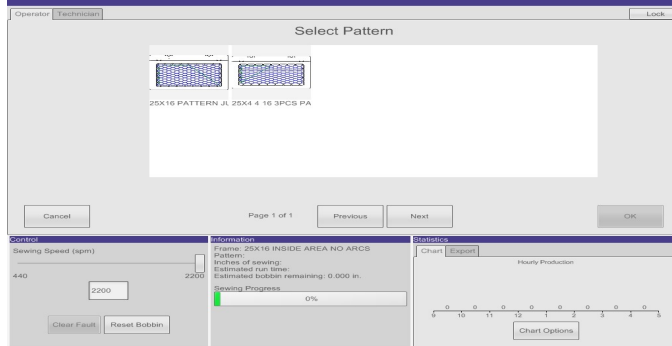
PICTURED HERE IS THE XL6000M WITH OUR UNIQUE HEAVY DUTY MATTRESS SEWHEAD—AVAILABLE WITH MULTIPLE SEWHEADS

AUTOMATIC FRAME CHANGE TABLE

- ▶ The extremely low maintenance SL7847 Frame Changing Table pneumatically raises and lowers the frames to create ease of inserting and removal of frames from the quilting machine within 6 seconds.
- ▶ Ergonomically designed clamps eliminate operator fatigue and muscle strains.



SEW HEAD



COLOR TOUCH SCREEN OPERATOR INTERFACE

- ▶ The XL6000M features an extremely user-friendly color touch screen operator interface.

- ▶ The programming computer is a standard PC using a Windows Operating System.
- ▶ Run any .DXF file using any CAD system.
- ▶ A consistent stitch length is produced under all sewing conditions.
- ▶ Production data acquisition is available.

SEWHEAD MECHANICS

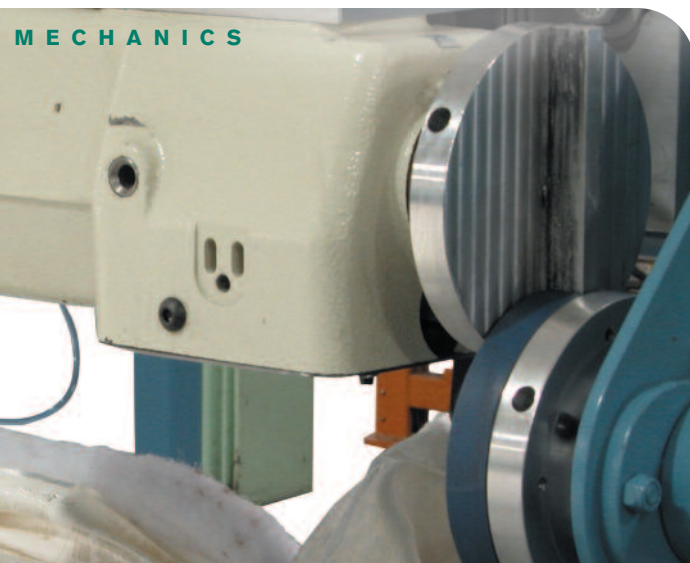
- ▶ A variety of sewheads are available with the heavy duty head having a 2" needle bar stroke.
- ▶ Available sew speed up to 2,500 SPM.
- ▶ X, Y, linear table speeds up to 1,000 IPM.
- ▶ Standard frame size 90" x 90".
- ▶ Maximum frame size up to 140" x 140".
- ▶ Automatic thread break sensor.
- ▶ Automatic backtack at every start and stop during the pattern cycle.
- ▶ Automatic thread trimming for tack and jump patterns.
- ▶ Compound Presser Foot.
- ▶ Needle size up to #28.
- ▶ Huge bobbin three times normal capacity.

PRECISION ENGINEERED

- ▶ The XL6000M is the most cost-effective, precision engineered quilting machine available.
- ▶ Our expert team of engineers have spent many hours designing and testing the mechanisms utilized on the XL6000M through rigorous stress and strain analysis to manufacture the most efficient, low maintenance, quilting machine available.
- ▶ The XL6000M's X, Y linear table utilizes a carriage-less design for extremely low inertia.
- ▶ Low inertia eliminates pattern distortion typical of conventional quilters and allows the XL6000M to be capable of extremely high speeds.
- ▶ The X, Y linear table is driven by a linear actuator which consists of a steel reinforced polyurethane timing belt. Only minimal maintenance is required and no lubrication is necessary.



PRECISION
ENGINEERED



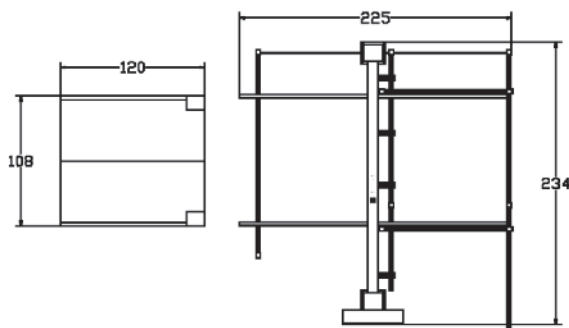
XL6000M

QUALITY

- ▶ ABM International, Inc. is a vertically integrated manufacturer with in-house design, programming, welding / fabricating, machining and assembly.
- ▶ With over 80 years of experience in manufacturing quilting machines, our highly trained expert staff consistently delivers the quality our customers deserve.

IN-HOUSE MACHINE DESIGN

- ▶ ABM's highly trained engineering design team anxiously awaits your projects.
- ▶ We are available 24/7 for customer service, so you can rest well at night!



ABM INTERNATIONAL'S WORLDWIDE HEADQUARTERS, MONTGOMERY TEXAS

ABM INTERNATIONAL, INC.

P.O. Box 1820
 Montgomery, TX 77356 USA
 Telephone: (936) 441-4401 Fax: (936) 597-4410
www.abminternational.com



TECHNICAL DATA

- ▶ Dell Pentium-based PC
- ▶ 16 GB hard drive
- ▶ USB 3.0
- ▶ Standard material size up to 90" x 90"
- ▶ Standard sewing line 82" x 94"
- ▶ Max. material size 140" x 140"
- ▶ Max. sewing line 128" x 128"
- ▶ Max. axis speed 1,000 IPM
- ▶ Max. sewing speed 2,500 SPM
- ▶ Machine weight 3,500 lbs.
- ▶ 220 Volts Single Phase (Three phase optional), 15 amps
- ▶ 100 PSI at 2.5 CFM
- ▶ Floor space 16' XL6000M w/table 20'x 28'



ABM International, Inc., headquartered in Texas, has been serving the home furnishing market of the textile industry for over 80 years.

At ABM International, Inc. we are committed to manufacturing excellence and superior customer service. Let us provide you with the highest quality state-of-the-art machinery that will enhance your operations, improve your production, reduce your costs—and ensure your success!

Disclaimer: Information contained in this brochure is subject to change without notice to consumer. ABM reserves the right to make engineering changes and modify or change its products at any time without notice. This includes changes and or modifications to the machine, electronics, software, mechanical component and frame specifications. Please confirm exact specifications with ABM International, Inc. at time of order placement.